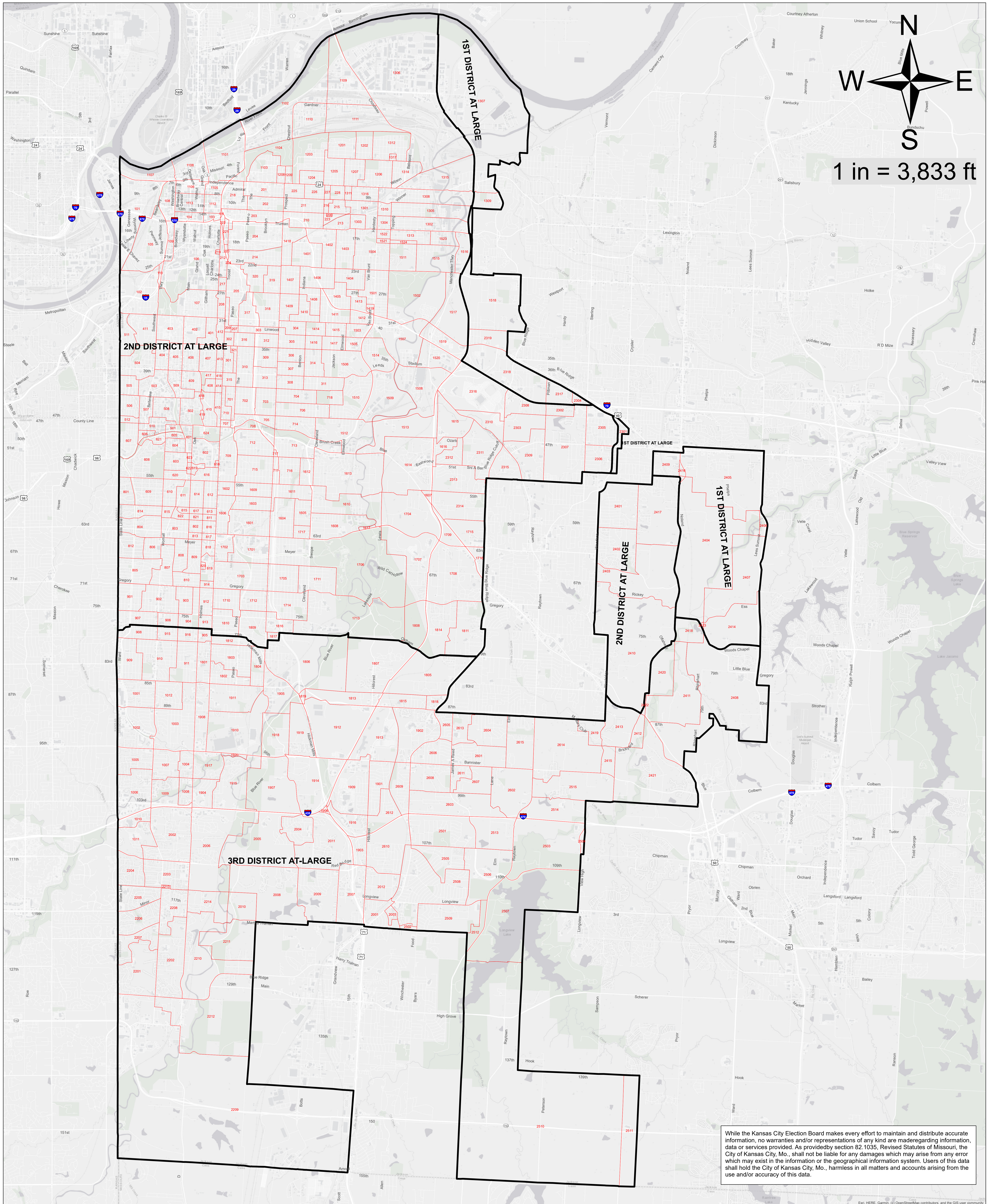


County Legislature At Large with Precincts

Kansas City Portion of Jackson County



While the Kansas City Election Board makes every effort to maintain and distribute accurate information, no warranties and/or representations of any kind are made regarding information, data or services provided. As provided by section 82.1035, Revised Statutes of Missouri, the City of Kansas City, Mo., shall not be liable for any damages which may arise from any error which may exist in the information or the geographical information system. Users of this data shall hold the City of Kansas City, Mo., harmless in all matters and accounts arising from the use and/or accuracy of this data.